

CIVILAB AT A GLANCE



Overview

Civilab is one of the most technically advanced civil engineering laboratories in South Africa.

The laboratory was established in 1969 and has been performing site investigations and laboratory testing for a wide range of civil engineering projects throughout the southern region of Africa and even further afield.

Civilab's extensive range of specialised laboratory testing provides the most comprehensive selection of integrated advisory and technical services for the following:

- Structural / Civil Engineering
- Construction
- Geotechnical
- Concrete
- Asphalt and Roads
- Geofabrics
- Mining
- Sports Fields
- Non-Destructive Testing (NDT)
- Structural Forensic Investigations



Civilab is a SANAS-accredited testing laboratory that complies with ISO 17025 procedures.

These procedures include structured proficiency testing programs and frequent internal and external quality audits, ensuring consistent and reliable laboratory results.

Our fully automated operations and customized Laboratory Management System ensure consistent, reliable laboratory results and efficient services tailored to client needs.

INNOVATION AND QUALITY

The company's wide range of laboratory and technical services is further complemented by the operations of its associates:

- **Soilco:** a KwaZulu-Natal based SANAS accredited Civil Engineering Testing Laboratory with branches in Pinetown, Pietermaritzburg and Vryheid, South Africa.
- **Labco Southern Africa (Pty) Ltd:** a SANAS accredited Civil Engineering Testing Laboratory with branches in Port Elizabeth, East London and Cape Town, South Africa.
- **SRT (Specialised Road Technologies):** a specialised road and asphalt testing laboratory with branches in Gauteng and Kwa-Zulu Natal, South Africa.



What makes us?

VISION

To be a dependable African construction laboratory that operates profitably and with maximum efficiency—continually enhancing our automated services to deliver accurate, reliable test results, on time, every time

MISSION

We are committed to delivering reliable, high-quality services in Civil and Geotechnical Engineering—adding value to design inputs across the mining and construction industries. Our work supports sustainable development, with a focus on benefiting both the environment and the communities we serve.

VALUES

QUALITY | EFFICIENCY | ETHICS | ENVIRONMENT

EMPOWEREMENT

Civilab (Pty) Ltd is actively engaged in initiatives that empower both its staff and the broader community.

We are committed to promoting economic transformation and sustainable growth through:

- Advancing employment equity and investing in skills development for youth, women, and other designated groups
- Hosting university students to complete practical training modules at our facilities
- Increasing the procurement of goods and services from local suppliers and targeted groups



www.civilab.co.za

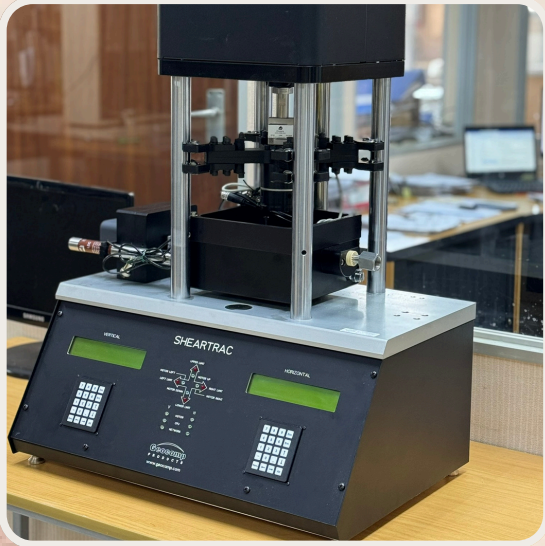


info@civilab.co.za

Our Services

Accredited, Advanced & Automated

- SANAS Accredited
- Laboratory Information Management Systems
- Automated Data Processing



Construction Quality Control

- Site audits
- Lab in a container solutions
- Site staff and technical support



Site Investigations

- Road Center line / Pavement Investigation
- Borrow Pit Prospecting
- Foundation Plate Jacking
- Permeability (Double Ring Infiltrometer)



www.civilab.co.za



info@civilab.co.za

Our Services (cont.)

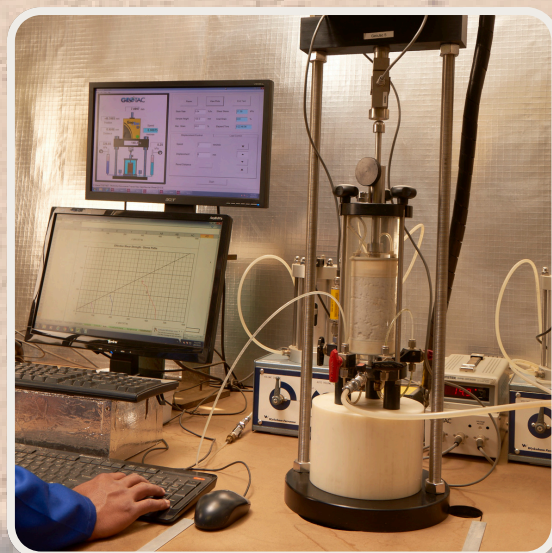
Testing of Construction Materials

- Soils
- Aggregates
- Asphalt & Bituminous Products
- Concrete tests, Mix Design, Specilaised Tests
- Bricks & Building Blocks



Geotechnical Testing

- Triaxial
- Direct Shear Test (Shear box)
- Consolidations & Swells
- Permeability
- Dispersiveness
- Dynamic Simple Shear (DSS)
- Geosynthetics/Geofabric (GCL) Tests
- Thermal Resistivity



Sports Turf Testing

- USGA Analysis
- Porosity
- Infiltration
- Bulk Density



www.civilab.co.za



info@civilab.co.za

Our Services (cont.)

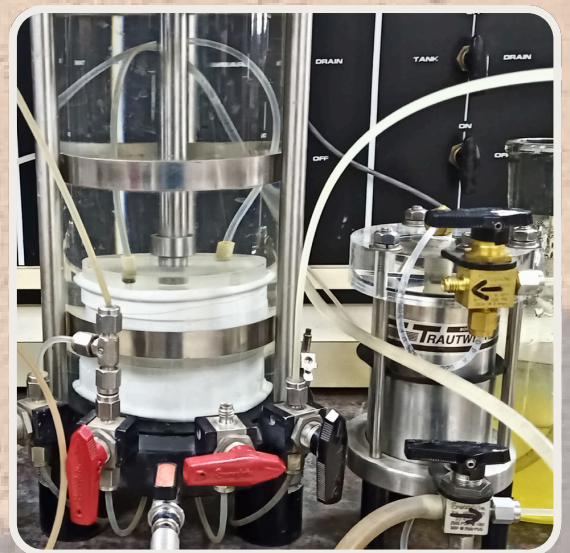
Soil Testing

- Moisture Content
- Atterberg Limits
- Sieve Analysis (Particle Size Distribution)
- Hydrometer Analysis
- Compaction Tests
- Proctor Test (Standard and Modified)
- California Bearing Ratio (CBR)
- Unconfined Compressive Strength (UCS)



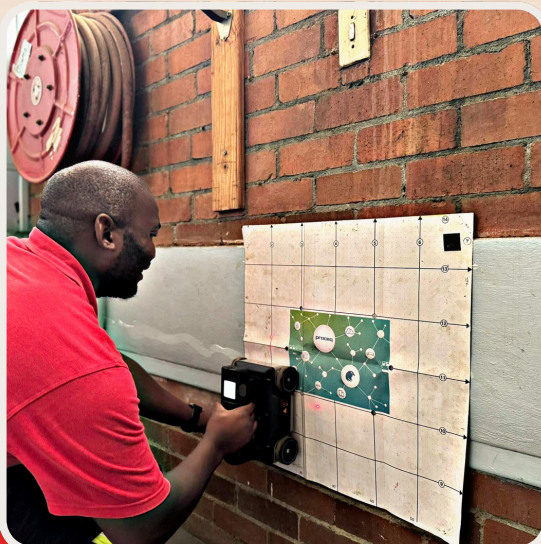
Geosynthetic Clay Liner Test

- ASTM D5887 – Hydraulic Conductivity
- ASTM D5890 – Swell Index
- ASTM D6766 – Compatibility Testing with Liquids



Non Destructive Testing

- Rebar Scanning & Surveys
- Concrete Column, Beam & Floor Scanning
- Post Tension Scanning
- Schmidt Hammer Test
- Ultra Pulse Velocity Test
- Honecombing / Services Detection



www.civilab.co.za



info@civilab.co.za

Contact us today



Booyens Branch

- 📍 36 Fourth Street, Booyens Reserve, Johannesburg
- ☎ (011) 835-3117
- 📞 (+27) 73 794 1534
- ✉ info@civilab.co.za

Rustenburg Branch

- 📍 112 Zending Street, Rustenburg
- 📞 (+27) 73 110 4807
- ✉ Rustenburg@civilab.co.za